

SAMSUNG

GSM TELEPHONE

SGH-i700

SERVICE *Manual*

GSM TELEPHONE



CONTENTS

1. Specification
2. Flow Chart of Troubleshooting
3. Exploded Views and Parts List
4. Electrical Parts List
5. Block Diagrams
6. PCB Diagrams

1. SGH-i700 Specification

1.1 PDA specification

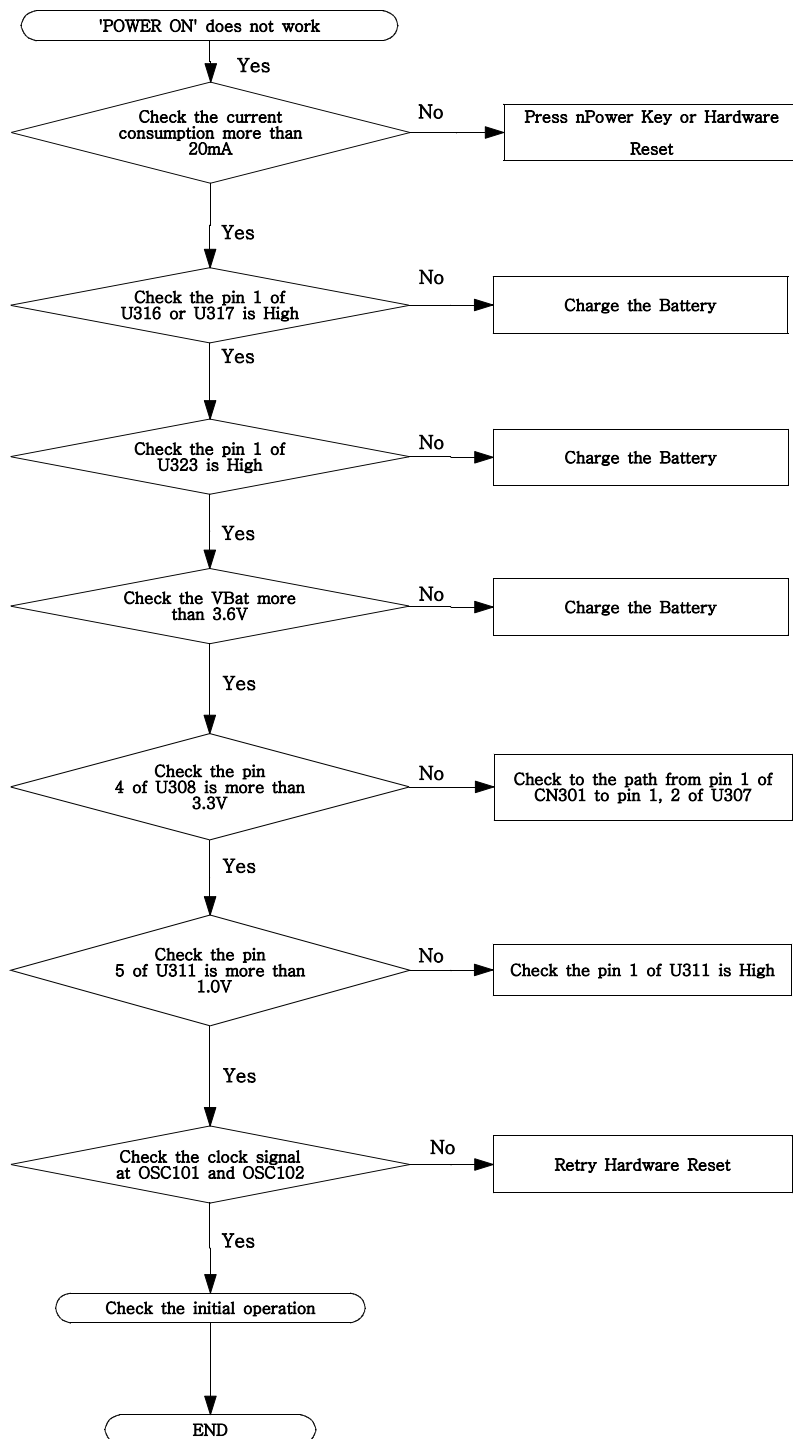
Parts Name		Description	Note
CPU		PXA255 Core : Intel(r) Xscale(TM) Core Frequencies : 100 ~ 400 MHz Clock : 3.6864 MHz, 32,768 KHz	
Memory	ROM	RD48F3300LOZDQ0, Flash Memory, 16M * 32 Bit	
	RAM	K4M513233, SDRAM, 4 Bank, 16M * 32 Bit	
LCD		Resolution : 240 * 320	
Audio CODEC		WM9705, 18-bit stereo audio, 4-wire touch screen	
Melody		YMU762, 40 poly	
SD Card		SPI Mode	
Camera		1/4" VGA CMOS Color Image Sensor, 640 * 480 Pixels, SPI Mode	
JTAG		IEEE 1149.1 Portocol support, Flash Programming Control	
Ethernet		Flash Programming Control	
UART		RS-232C	
IrDA		STUART's transmit and receive	
Battery	Main	Standard/Extend Capacitance : 1050/2000mA	
	Backup	Capacitance : 30mA	
Speaker		Impedance : 8 Ω , Size : Φ 20 mm * 4.6t	
Receiver		Impedance : 32 Ω , Size : Φ 12 mm * 3.2t	
Motor		RPM 7000 ~12000, Size : Φ 14 mm * 3.4t	
Key Matrix		4 * 4	

1.2 Phone Specification

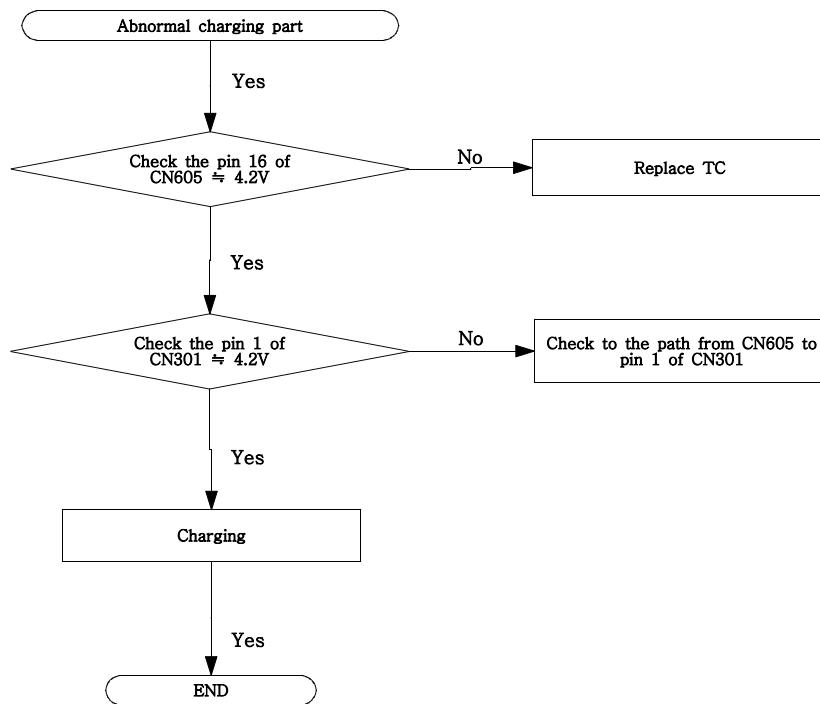
Parts Name	Description	Note
CPU	Trident EF version Core : DSP16000/ARM7IDM DSP Core : RAM(20k * 16), ROM(144K * 16) ARM CORE : RAM(4K * 32), ROM(2K * 32) Clock : 13 MHz, 32,768 KHz	
Memory	LRS1826A ROM : 4M * 16 Bit * 2 RAM : 2M * 16 Bit	
PMIC	Single-cell Li-Ion Charger, SIU, LED Driver Power-On/Off and reset control logic 8-bit ADC, Seven programmable low-drop-out regulators 1.8/3.0V SIM power supply and logic level translators	
CODEC	Supports GSM 2+ new feature : multislotting(GPRS and HSCSD) ADC and DAC function for baseband and voice band DAI(digital audio interface) 32.768 clock on-chip oscillator GMSK modulator(88/144 bits)	
RF Transceiver	Low-IF Receiver, Universal Baseband Interface Offset-PLL Transmitter Dual RF Synthesizer, GPRS Class 12 Compliant Serial Interface Dual and Triple-Band Support(GSM850/E-GSM900/DCS1800/PCS1900)	
PAM	Complete Power Control Solution Single 2.9V to 5.5V Supply Voltage GSM, E-GSM and DCS/PCS Products/GPRS Class 12 Compatible + 35dBm GSM Output Power at 3.5V/ + 33dBm DCS/PCS Output Power at 3.5V	
Diplexer	GSM : 897.50 \pm 17.5 MHz DCS : 1747.50 \pm 37.5 MHz GSM : 1880.00 \pm 30.0 MHz	
JTAG	IEEE 1149.1 Protocol Support, Flash Programming Control	
UART	RS-232C	

2. SGH-i700 Flow Chart of Troubleshooting

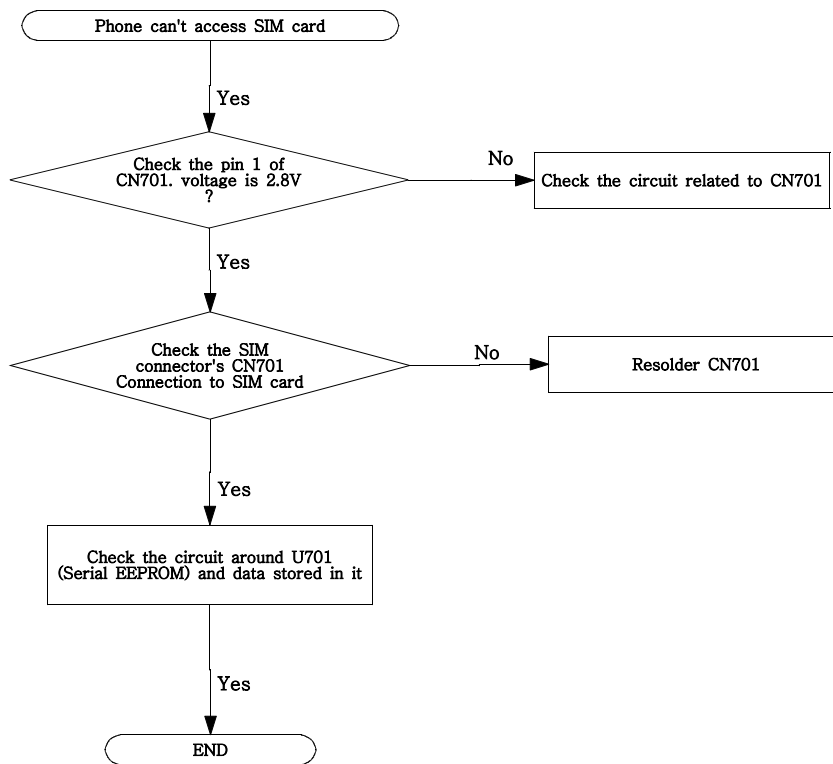
1.Power On



3. Charge Part

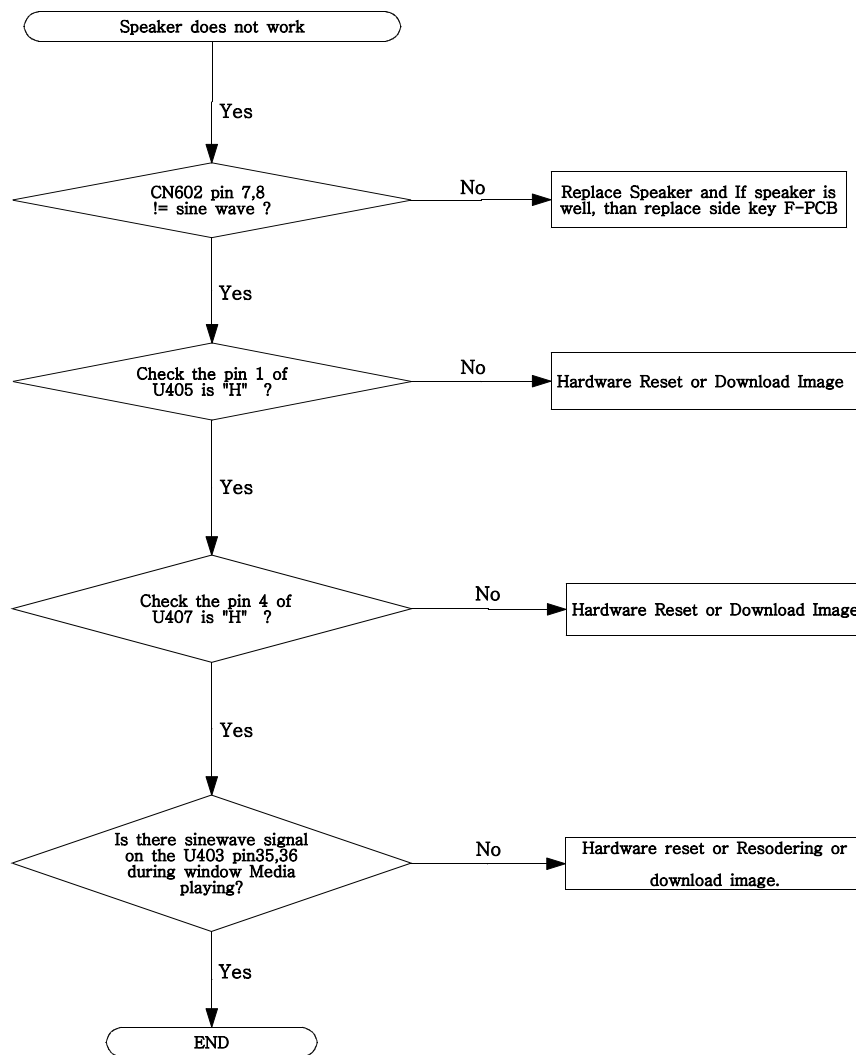


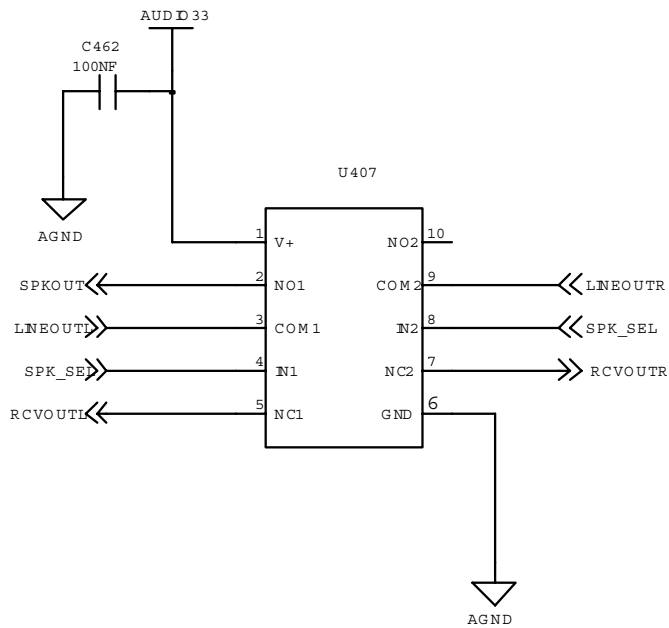
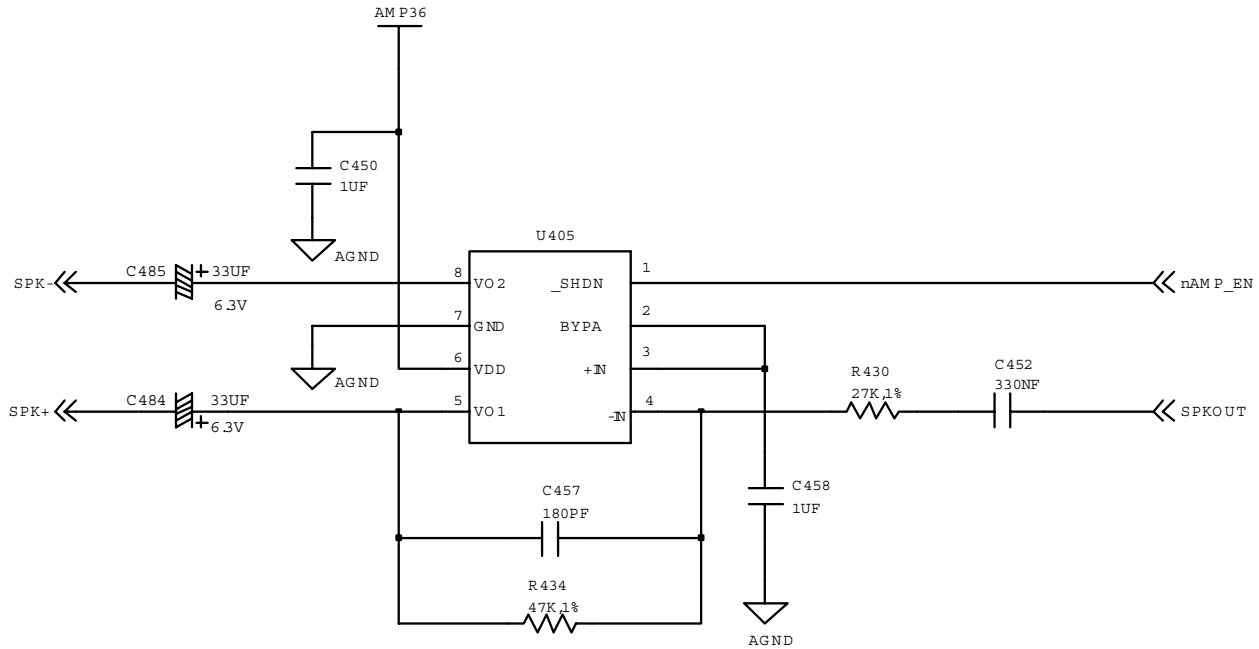
4. SIM Part



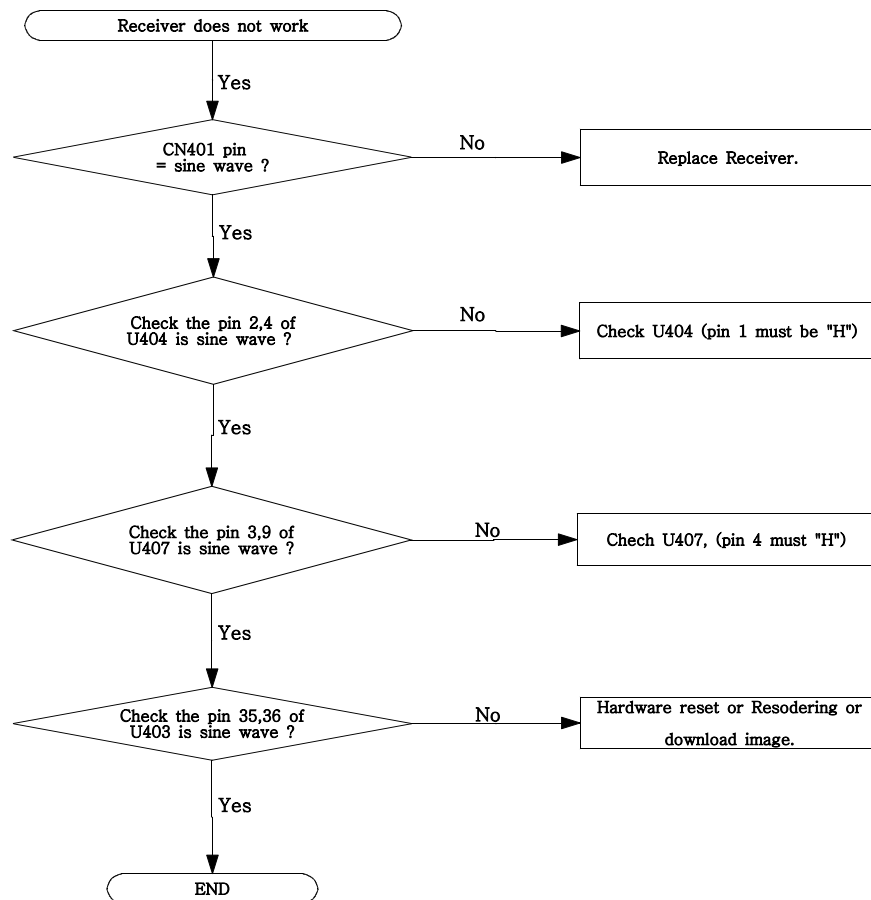


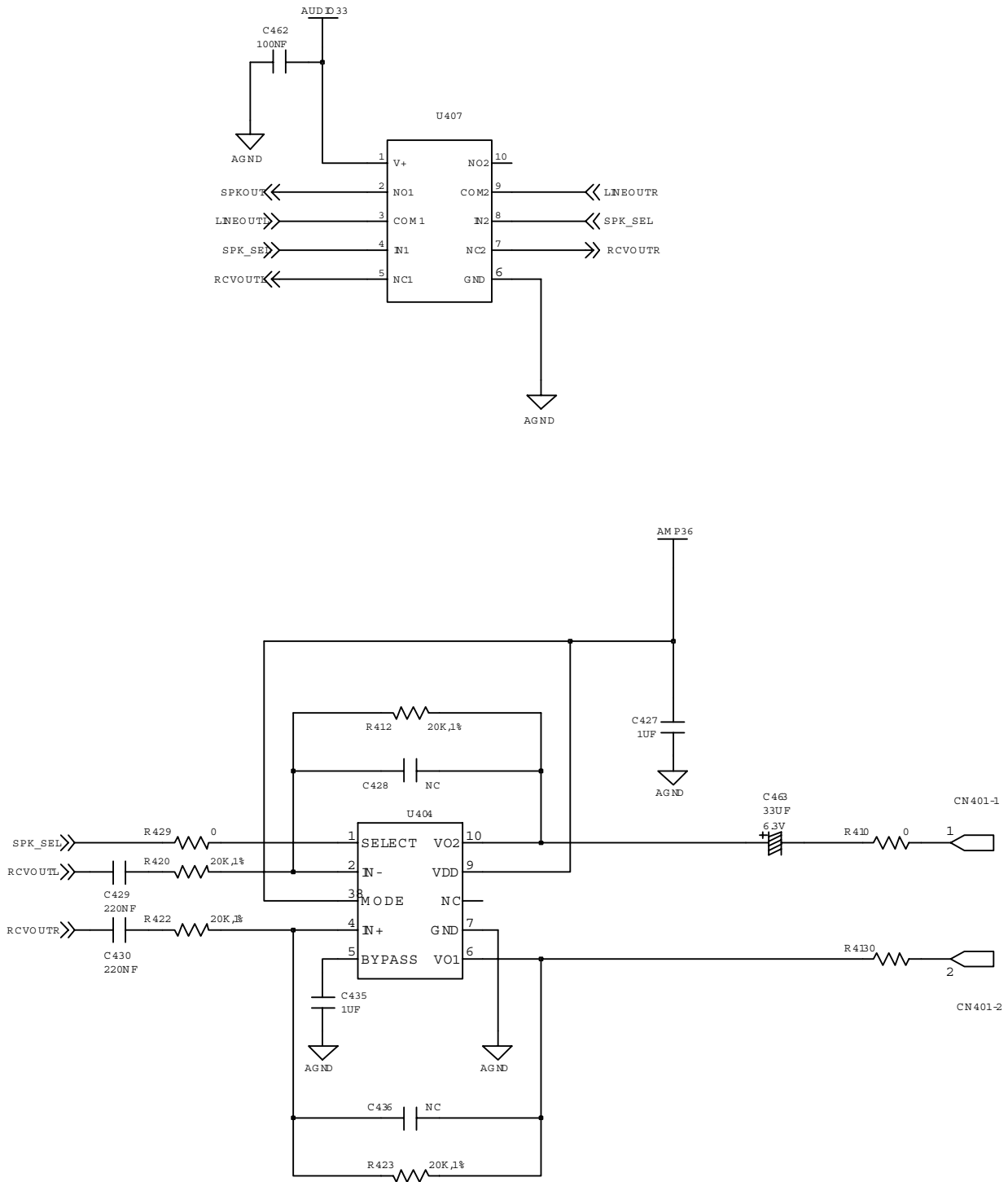
6. Speaker Part



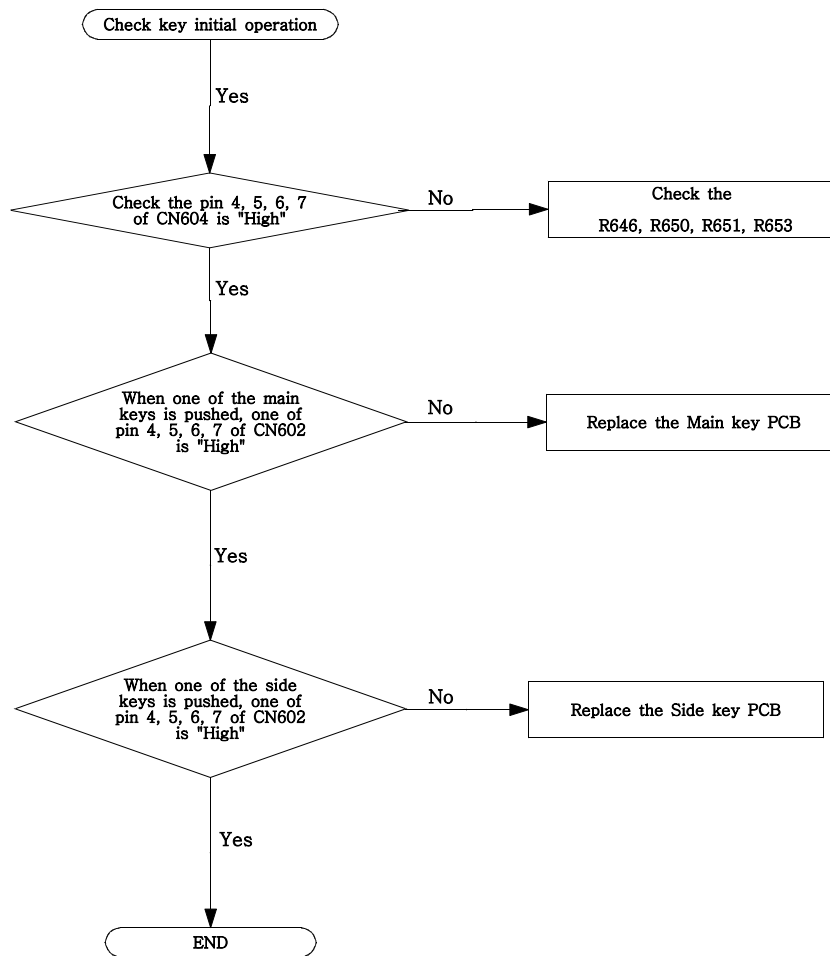


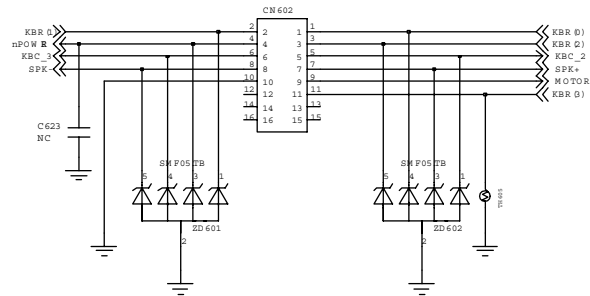
7. Receiver Part



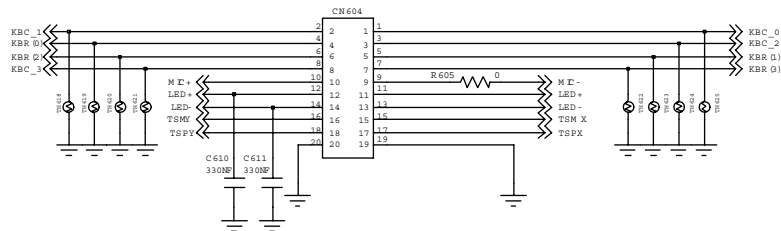


8. Key Matrix Part

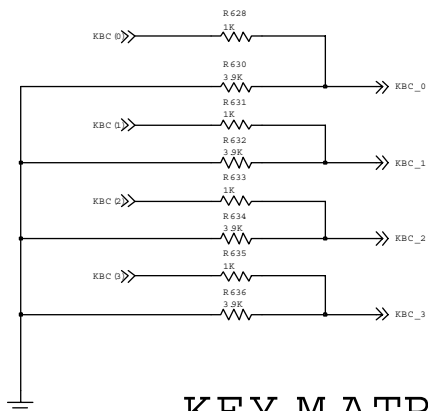




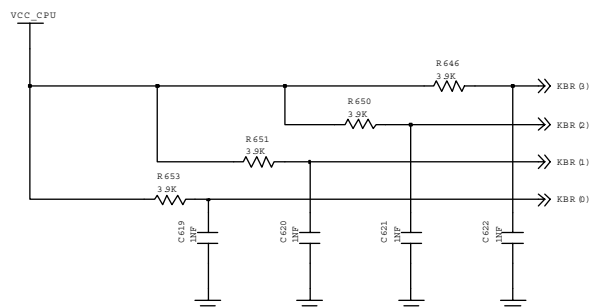
SIDE KEY



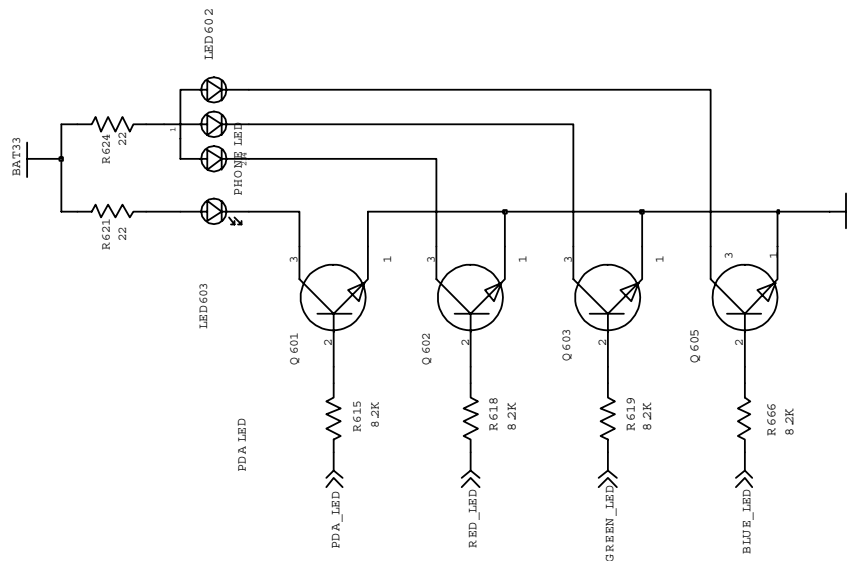
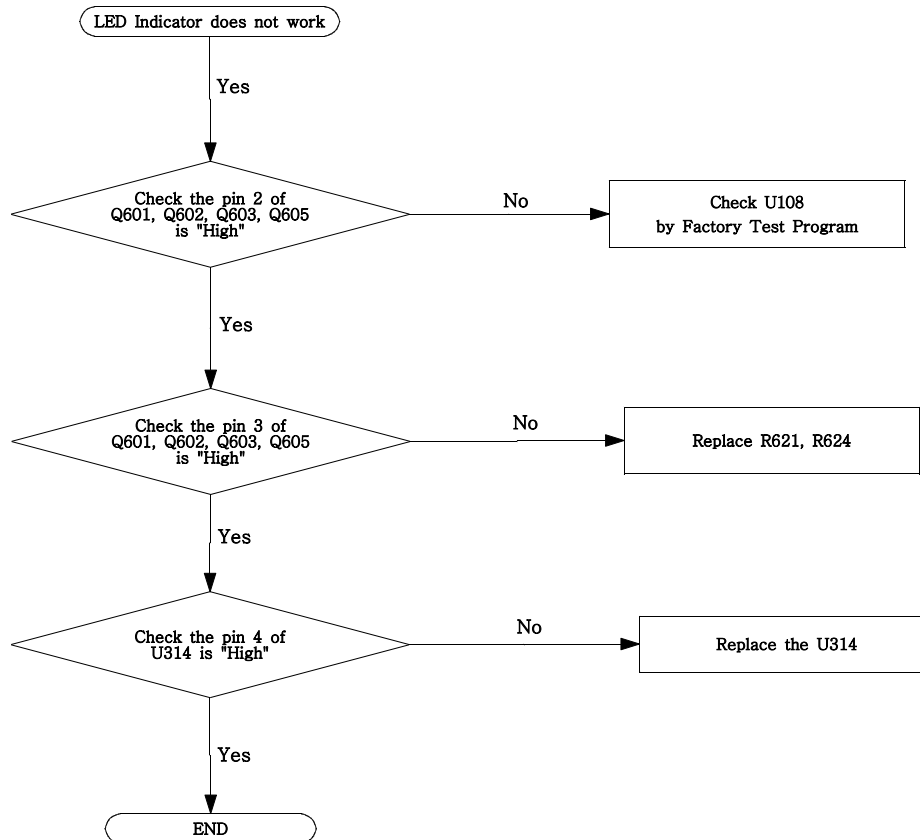
MAIN KEY



KEY M A T R I X

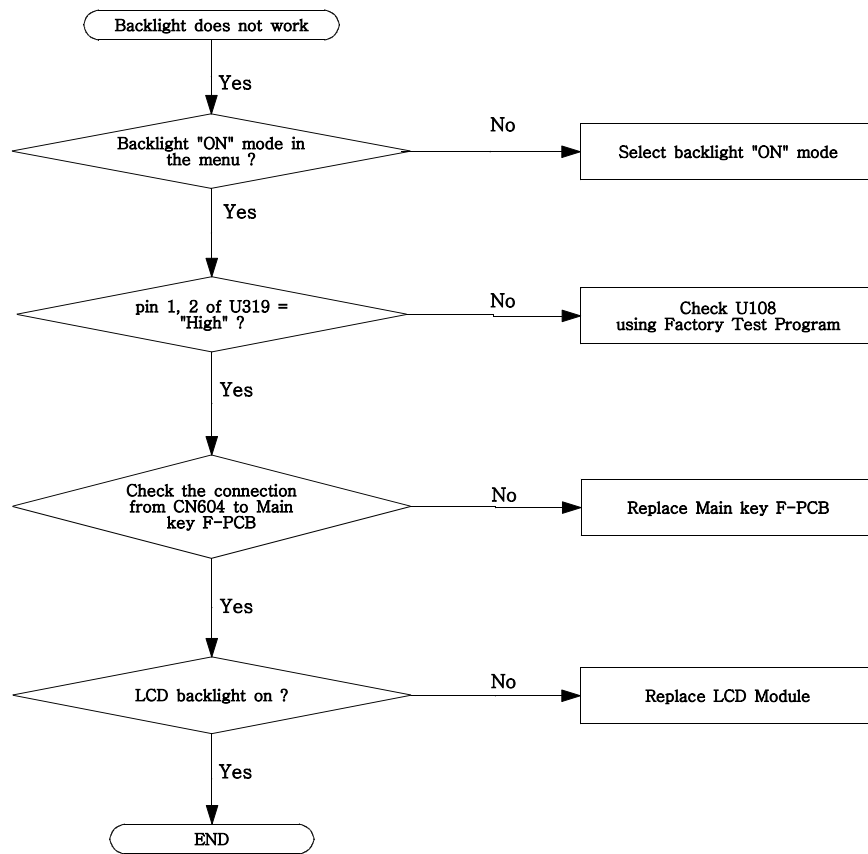


9. Led Indicator Part

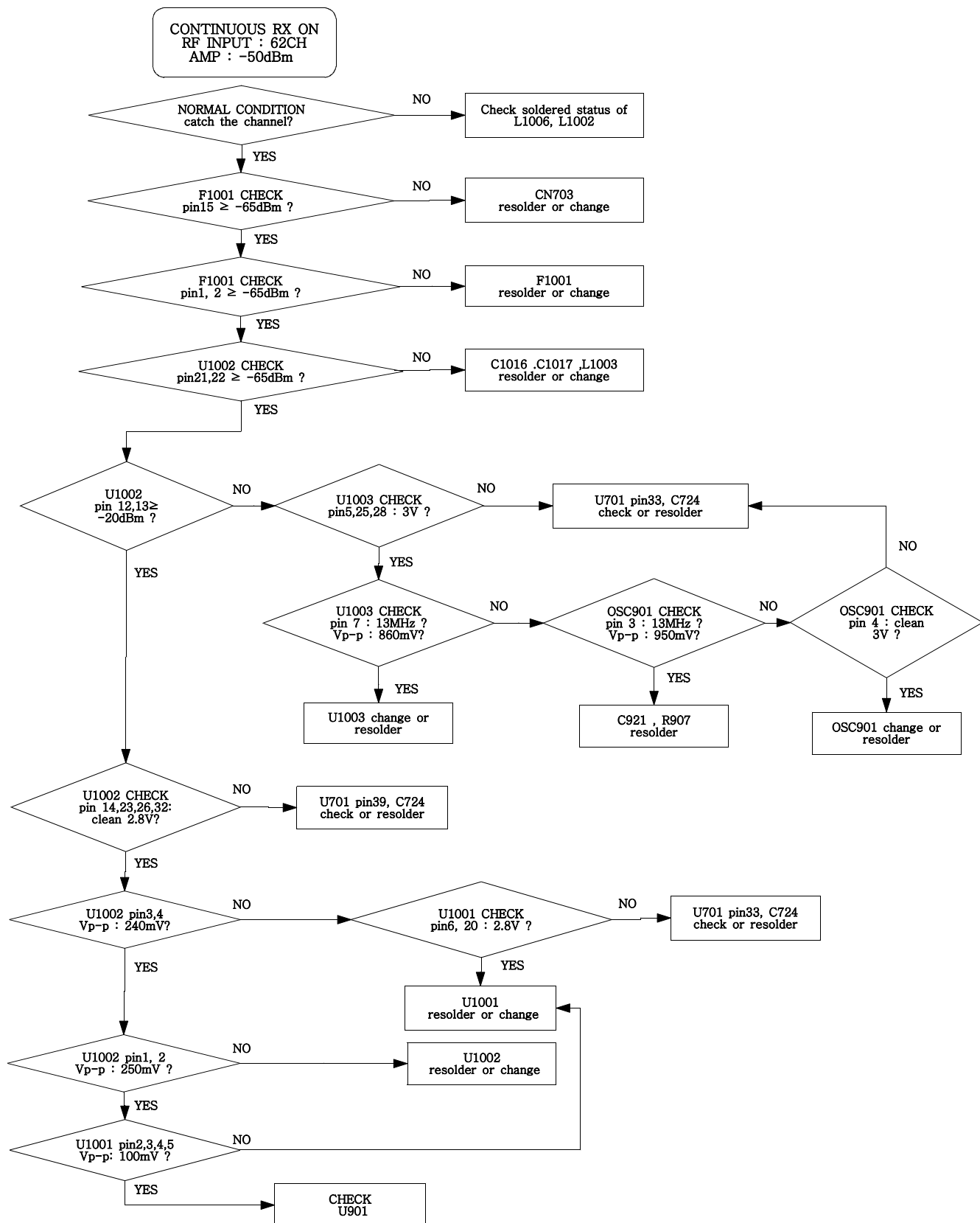


STATUS LED

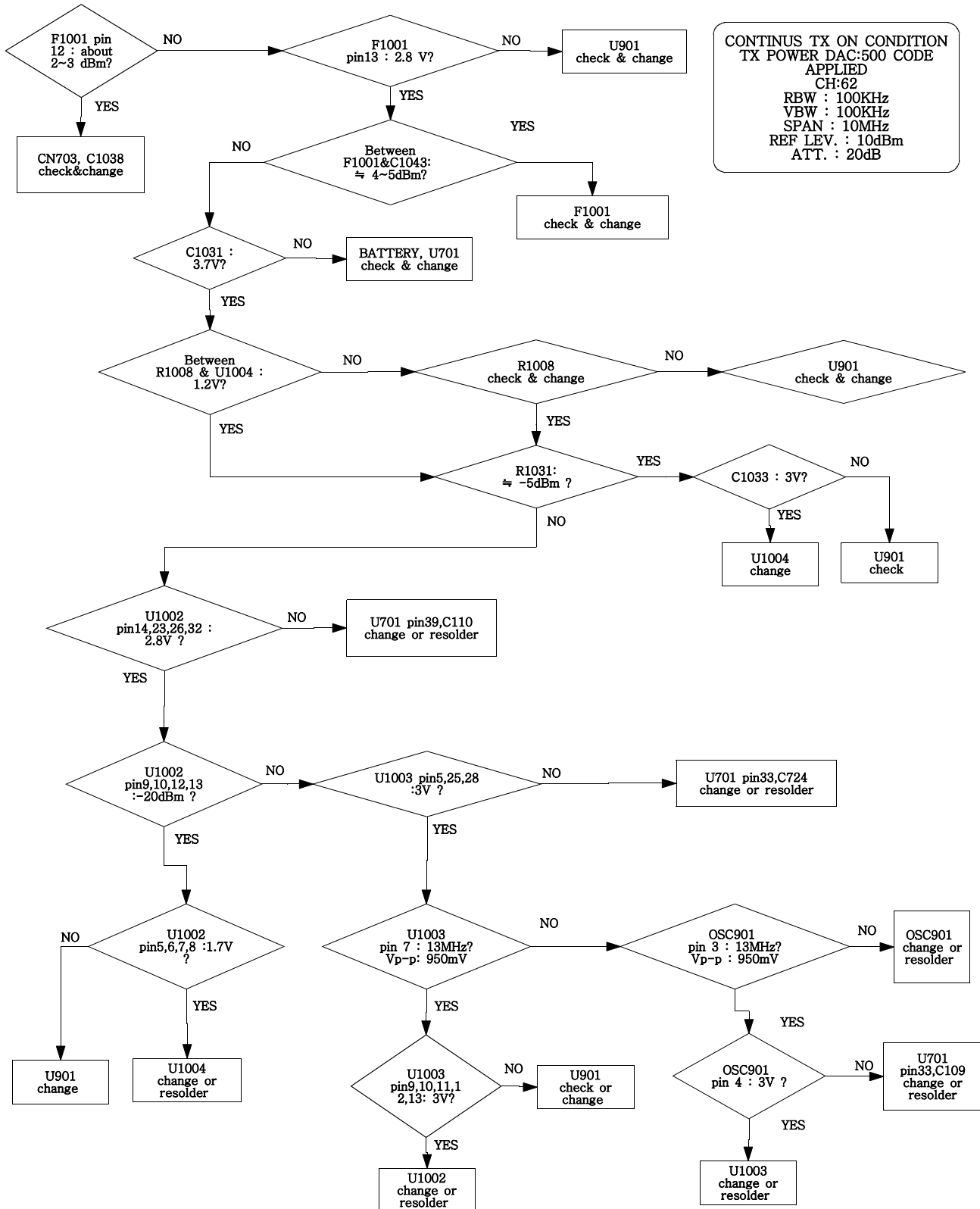
10. Backlight Part



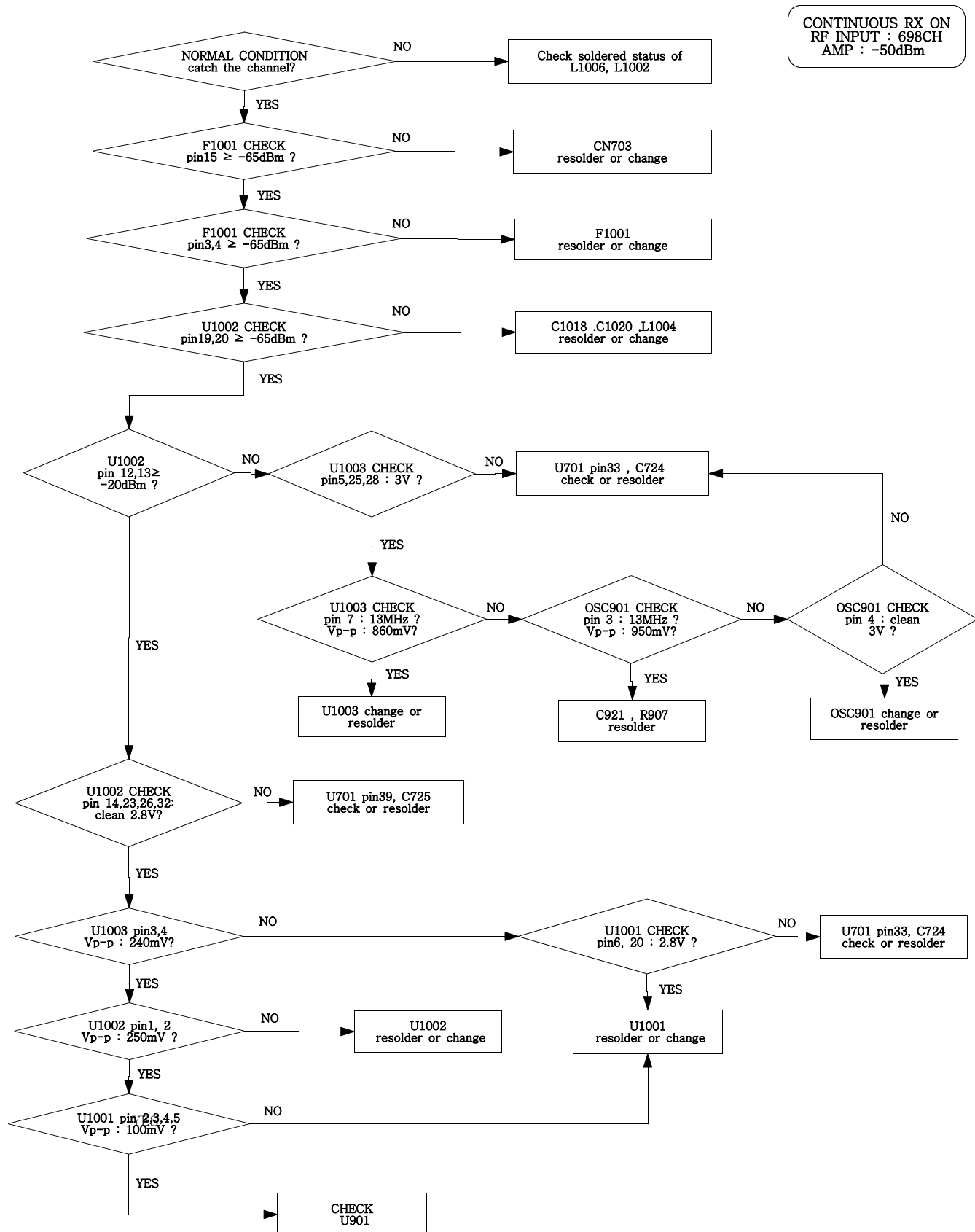
11. EGSM Receiver



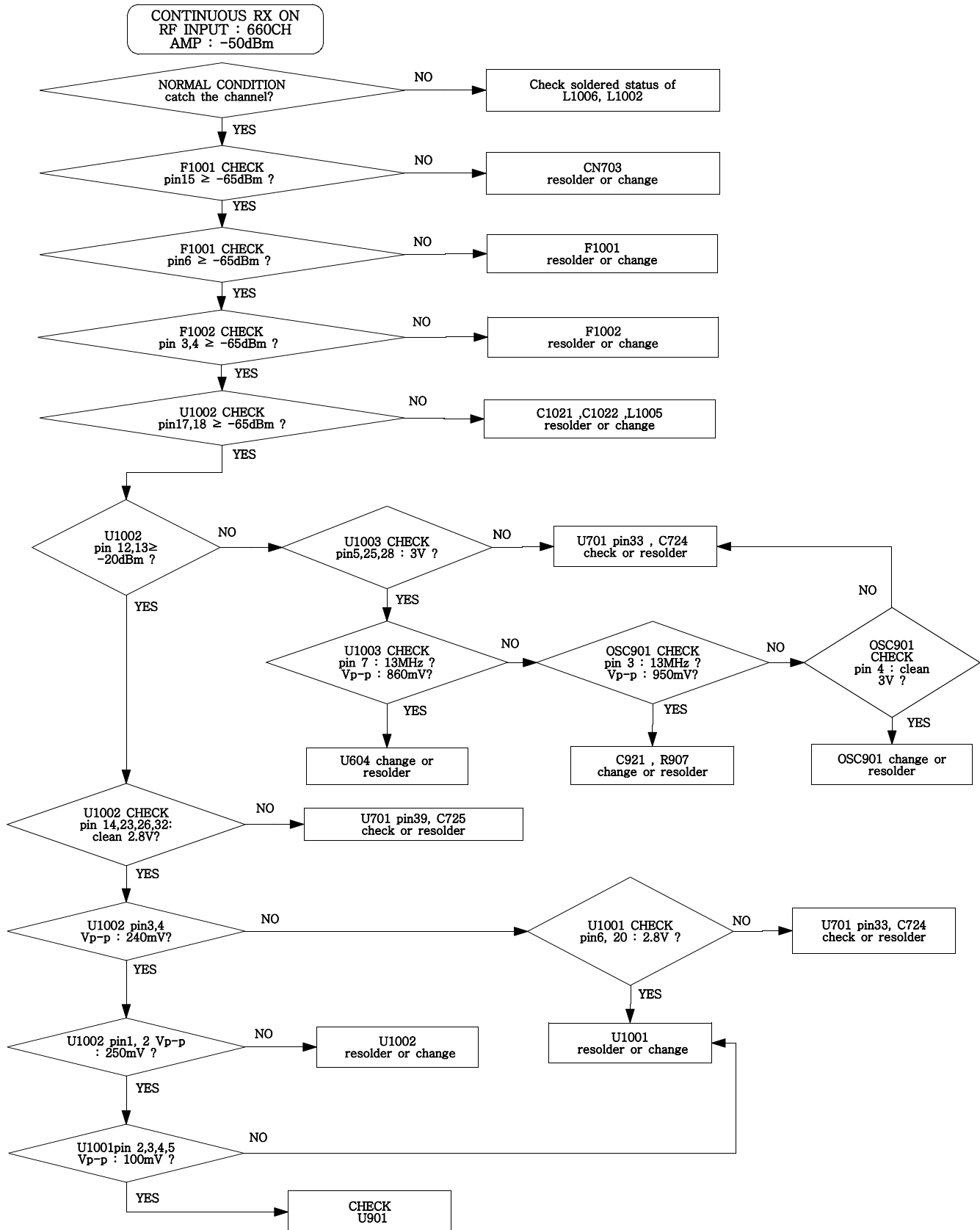
12. EGSM Transmitter



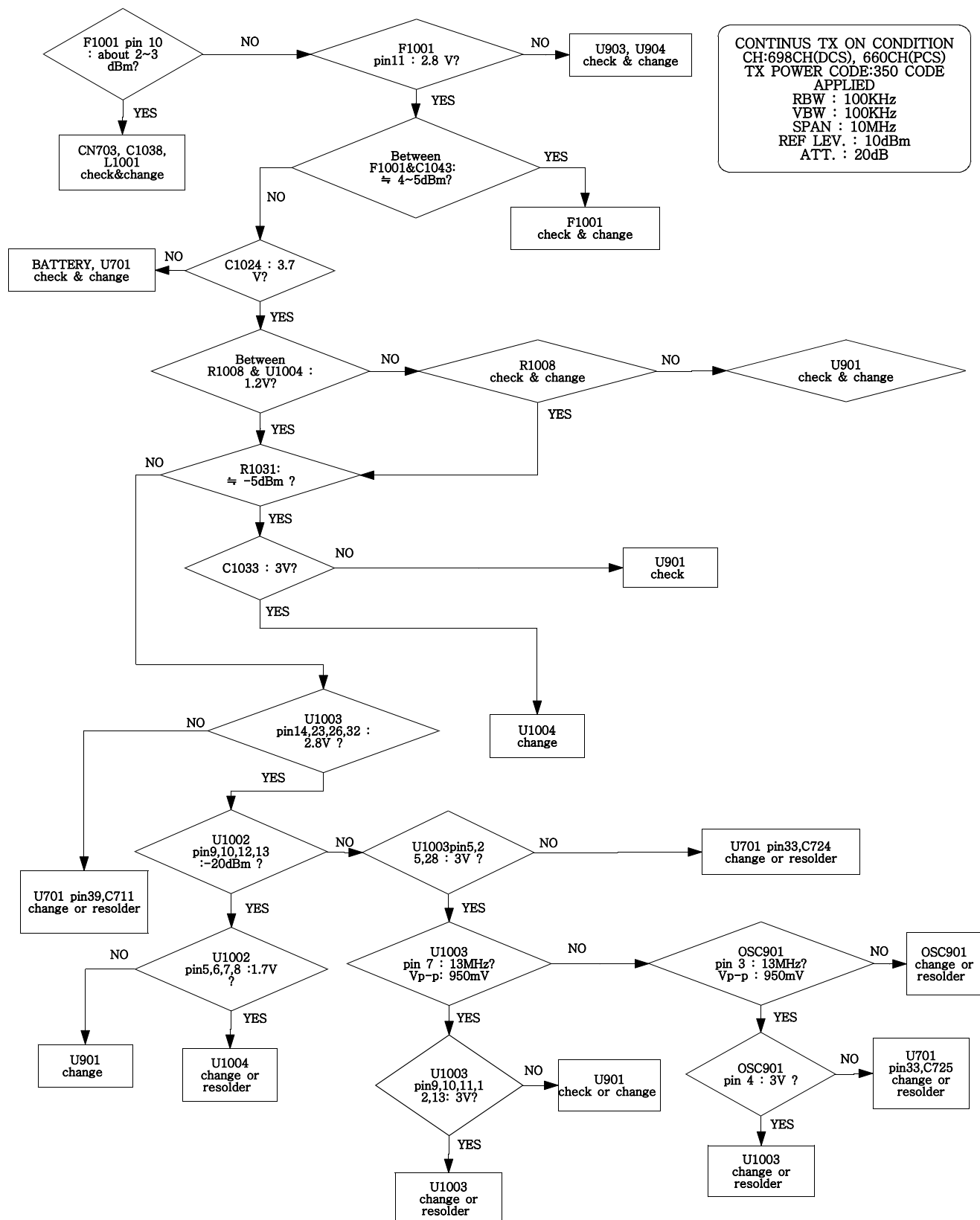
13. DCS Receiver



14. PCS Receiver

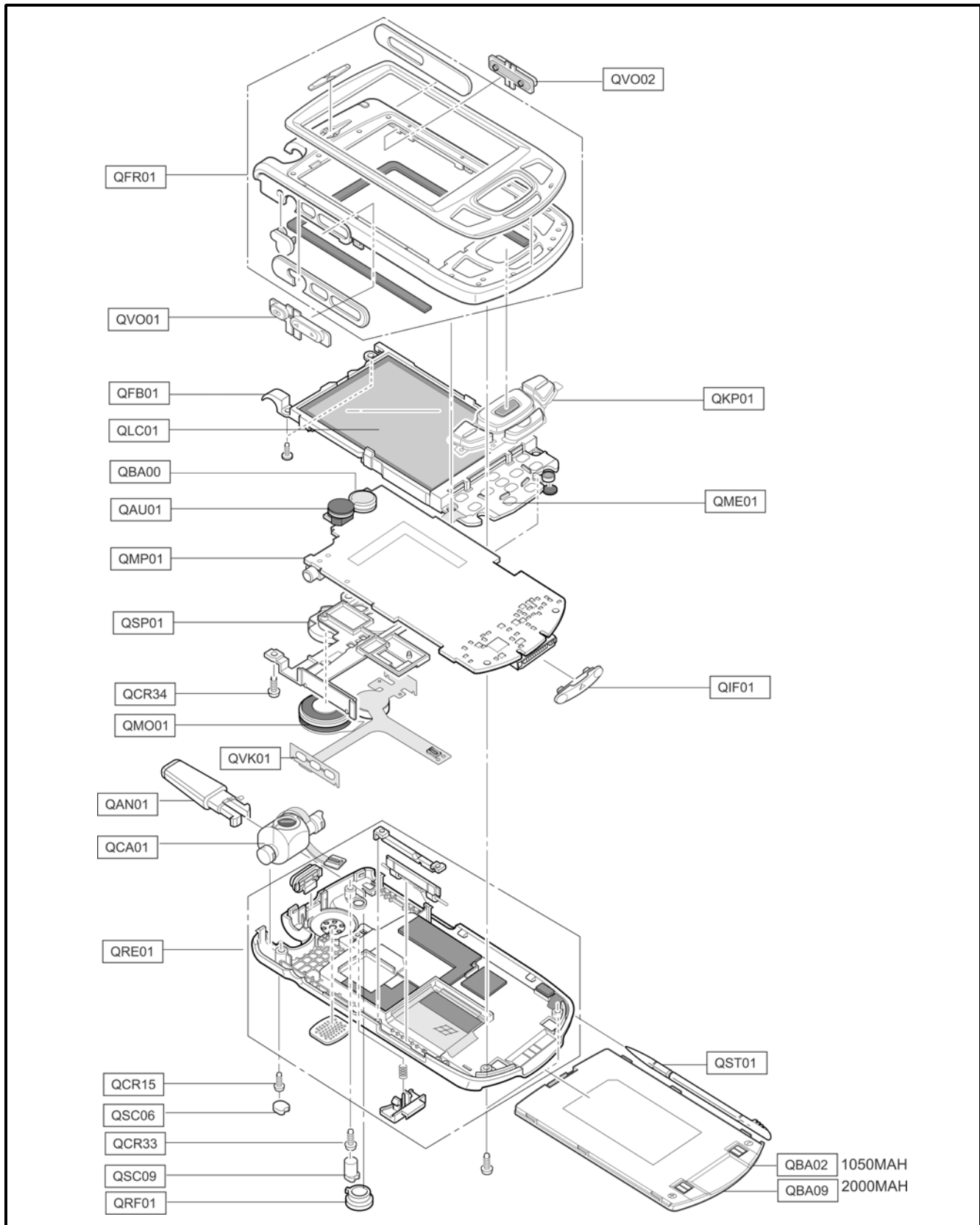


13. DPCS Transmitter



3. SGH-i700 Exploded View and its Parts list

1. Cellular phone Exploded View



2. Cellular phone Parts list

Location NO.		Description	SEC CODE	Remark
QFR01		FRONT COVER	GH75-03084A	
QVO02		POWER TRANS KEY	GH75-03083A	
QVO01		VOICE VOLKEY	GH75-03082A	
QFB01		LCD BRACKET	GH75-04279A	
QLC01		LCD	GH07-00455A	
QBA00		BATTERY	4302-001135	
QAU01		AUDIO RECEIVER	3009-001042	
QMP01		MAIN PBA	GH92-01523A	
QKP01		KEYPAD	GH75-03085A	
QME01		UNIT KEYPAD	GH59-00793A	
QMO01		MOTOR	GH31-00056A	
QCR34		SCREW	6001-001764	
QSP01		SPEAKER	3001-001425	
QAN01		ANTENNA	GH42-00311A	
QVK01		UNIT SIDE KEY	GH59-00794A	
QCA01		CAMERA	GH59-00792A	
QRE01		REAR COVER	GH75-03086A	
QCR15		SCREW	6001-001673	
QSC06		SCREW COVER L	GH72-12386A	
QSC09		SCREW COVER R	GH72-12389A	
QRF01		MOBILE CAP	GH72-14629A	
QIF01		IF COVER	GH72-15073A	
QCR33		SCREW	6001-001860	
QST01		STYLUS PEN ASSY	GH75-04100A	
QBA02		BATTERY 1050MAH	GH43-00964A	
QBA09		BATTERY 2000MAH	GH43-00965A	

3. Test Jig

[GH80-02298A]



3-1. RF Test Cable (GH39-00090A)



3-2. Test Cable (GH39-00237A)



3-3. Serial Cable



3-4. Power Supply Cable



3-5. Data Cable (GH39-00186A)



3-6. Travel Charger (GH44-00558A)



3-7. USB cable



3-8. JTAG cable



4. SGH-i700 MAIN Electrical Parts List

SEC Code	Design LOC
GH92-01523A	
GH41-00458A	
4302-001135	
GH68-02026A	
GH71-01052A	ANT1001
2203-002677	C1001
2203-001405	C1003
2203-000995	C1005
2203-000812	C1006
2203-001405	C1008
2203-000233	C1009
2203-005061	C101
2203-001405	C1010
2203-000233	C1012
2203-001405	C1013
2203-005288	C1016
2203-005288	C1017
2203-001385	C1018
2203-005061	C102
2203-001385	C1020
2203-005234	C1021
2203-005234	C1022
2404-001239	C1024
2203-000812	C1028
2203-005061	C103
2203-000812	C1030
2203-000812	C1031
2203-000438	C1033
2203-000995	C1038
2203-005061	C104
2203-000233	C1040
2203-000233	C1041
2203-000233	C1042
2203-000812	C1043
2203-000995	C1044
2203-005061	C105
2203-005061	C106
2203-005061	C107
2203-005061	C108

SEC Code	Design LOC
2203-005061	C109
2203-005061	C110
2203-005061	C111
2203-005061	C112
2203-005061	C113
2203-005061	C114
2203-005061	C115
2203-005061	C116
2203-005061	C118
2203-005061	C120
2203-005061	C121
2203-005061	C122
2203-005061	C123
2203-005061	C124
2203-005061	C125
2203-005061	C126
2203-005061	C127
2203-005061	C128
2203-005061	C129
2404-001151	C130
2203-005061	C131
2203-005061	C132
2203-005061	C133
2203-005061	C134
2203-005061	C135
2203-005061	C136
2203-005061	C137
2203-005061	C138
2203-005061	C139
2203-005061	C140
2203-005061	C141
2203-005061	C142
2203-005061	C143
2203-006093	C161
2203-005061	C162
2404-001086	C163
2203-005503	C164
2203-006091	C165
2203-005061	C166

SEC Code	Design LOC
2203-006093	C168
2203-000438	C169
2203-001405	C170
2203-001405	C171
2203-005061	C172
2203-000885	C173
2203-005061	C174
2203-005061	C201
2203-005061	C202
2203-006093	C203
2203-006093	C204
2203-005061	C212
2203-005061	C213
2203-005061	C214
2203-005061	C215
2203-005061	C216
2203-005061	C217
2203-005061	C218
2203-005061	C219
2203-005061	C220
2203-005061	C221
2203-005061	C222
2203-005061	C223
2203-005061	C224
2203-005061	C225
2203-005061	C226
2203-005061	C228
2404-001268	C229
2404-001268	C230
2203-005482	C231
2203-005061	C232
2203-005061	C233
2203-005061	C234
2203-005061	C235
2203-005061	C236
2203-005061	C237
2203-005061	C238
2404-001239	C301
2404-001239	C302

SEC Code	Design LOC
2404-001268	C303
2404-001268	C304
2404-001268	C305
2404-001268	C306
2404-001268	C307
2404-001268	C308
2203-000679	C309
2203-000940	C310
2203-005061	C311
2203-002443	C312
2203-005061	C313
2404-001101	C314
2203-005061	C315
2404-001239	C316
2203-005061	C317
2404-001268	C318
2404-001239	C319
2404-001268	C320
2203-005061	C321
2203-000438	C322
2203-005061	C323
2203-005061	C324
2203-005840	C325
2404-001268	C326
2404-001101	C327
2203-005840	C329
2404-001151	C330
2203-005061	C331
2404-001268	C332
2404-001268	C333
2203-005482	C334
2404-001339	C335
2404-001268	C336
2203-005061	C337
2203-006307	C338
2404-001268	C339
2404-001151	C340
2203-000585	C341
2404-001151	C342

SEC Code	Design LOC
2203-005482	C343
2404-001268	C344
2203-000550	C345
2203-005061	C346
2404-001268	C347
2404-001268	C351
2203-000438	C353
2203-002525	C354
2203-000438	C355
2203-005061	C356
2203-005061	C357
2203-005061	C358
2203-005061	C359
2203-005061	C401
2203-005144	C402
2404-001268	C403
2203-005481	C405
2203-005061	C406
2203-005061	C407
2404-001151	C408
2404-001268	C409
2404-001268	C410
2404-001268	C411
2404-001268	C412
2203-005061	C413
2203-005061	C414
2203-005061	C415
2203-005061	C416
2404-001151	C417
2203-000940	C418
2203-005061	C419
2203-005061	C420
2203-005571	C421
2203-005571	C422
2203-001259	C423
2404-001151	C426
2203-005065	C427
2203-006190	C429
2203-006190	C430

SEC Code	Design LOC
2203-005509	C431
2404-001151	C432
2404-001268	C433
2203-000940	C434
2203-005065	C435
2404-001268	C437
2203-005061	C438
2203-005061	C439
2203-005571	C440
2203-005571	C441
2203-005057	C442
2203-005057	C443
2203-005065	C450
2203-005509	C452
2203-005503	C457
2203-005065	C458
2203-005061	C459
2203-005503	C460
2203-005061	C462
2203-005065	C465
2404-001151	C470
2203-000438	C476
2203-000438	C477
2203-006190	C482
2404-001151	C484
2404-001151	C485
2203-005482	C501
2203-005571	C502
2203-005061	C503
2203-005061	C504
2404-001268	C505
2404-001268	C506
2404-001268	C507
2203-006053	C508
2203-005482	C509
2203-005061	C510
2203-006053	C511
2203-005061	C512
2203-005061	C513

SEC Code	Design LOC
2203-005482	C514
2203-005482	C515
2203-005482	C516
2203-005482	C517
2203-005061	C518
2203-005061	C519
2203-005061	C520
2203-005061	C521
2203-006113	C522
2203-000359	C524
2203-000359	C525
2203-000359	C526
2203-000359	C527
2203-000359	C528
2203-000359	C529
2203-000359	C530
2203-000359	C531
2203-005061	C532
2203-005061	C533
2203-005061	C538
2203-005061	C539
2203-006113	C540
2203-006113	C541
2203-006113	C542
2203-000812	C544
2203-000812	C549
2203-000812	C550
2203-005482	C601
2203-005482	C602
2203-000438	C604
2203-005065	C605
2404-001268	C606
2404-001268	C607
2203-005061	C608
2203-005061	C609
2203-005509	C610
2203-005509	C611
2203-005482	C612
2203-006093	C613

SEC Code	Design LOC
2404-001101	C616
2203-000438	C619
2203-000438	C620
2203-000438	C621
2203-000438	C622
2203-000812	C701
2203-005061	C702
2203-001598	C703
2203-005482	C704
2203-000812	C705
2203-000812	C706
2203-005061	C708
2203-001652	C711
2203-001598	C712
2203-000233	C715
2203-000254	C716
2203-006053	C717
2203-006053	C718
2203-001652	C719
2203-001652	C720
2203-005061	C721
2203-005061	C722
2203-005061	C723
2203-006053	C724
2203-006053	C725
2203-000254	C726
2203-005482	C741
2203-005496	C801
2203-005496	C802
2203-000254	C803
2203-000254	C804
2203-000254	C805
2203-000254	C806
2203-000254	C807
2203-000254	C808
2203-005061	C809
2203-001405	C810
2203-000679	C811
2203-000254	C812

SEC Code	Design LOC
2203-000628	C813
2203-005061	C814
2203-000628	C815
2203-005061	C816
2203-005061	C817
2203-000679	C818
2203-000836	C903
2203-000233	C905
2203-005496	C906
2203-005065	C907
2203-005061	C908
2203-000254	C909
2203-005480	C910
2203-005480	C911
2203-000254	C913
2203-000254	C914
2203-000254	C915
2203-000254	C916
2203-000233	C917
2203-005052	C918
2203-000233	C919
2203-000254	C921
2203-000254	C922
2203-000386	C923
2203-001412	C924
2203-000254	C925
2203-000254	C926
2203-000233	C927
3711-004642	CN301
3711-004642	CN302
3710-001105	CN401
3711-005225	CN501
3711-005159	CN503
3709-001251	CN601
3711-005225	CN602
3711-005183	CN603
3711-005285	CN604
3710-001732	CN605
3709-001298	CN701

SEC Code	Design LOC
3705-001255	CN703
0401-001052	D301
0404-001016	D302
0404-001016	D303
0404-001152	D304
0404-001152	D305
0404-001152	D306
0404-001167	D307
0403-001467	D308
0406-001150	D501
0406-001150	D502
0406-001150	D503
0406-001150	D504
0406-001150	D505
0406-001150	D506
0406-001150	D507
0406-001150	D508
0407-000115	D601
3722-002153	EAR401
2909-001191	F1001
2904-001450	F1002
2703-001751	L1001
2703-001751	L1002
2703-002558	L1003
2703-002543	L1004
2703-001708	L1005
2703-001724	L1006
2703-001242	L101
2703-002409	L301
2703-000398	L302
2703-002346	L304
2703-002409	L305
3301-001105	L306
2703-001242	L401
2703-000300	L402
2703-001868	L403
3301-001105	L501
0604-001146	LED601
0601-001654	LED602

SEC Code	Design LOC
0601-001602	LED603
2804-001516	OSC101
2801-003747	OSC102
2801-004225	OSC401
2804-001492	OSC501
2804-001548	OSC502
2801-003747	OSC801
2809-001260	OSC901
0504-000172	Q101
0505-001217	Q102
0504-000168	Q103
0505-001454	Q104
0505-001454	Q105
0501-002202	Q106
0501-000225	Q401
0504-000167	Q402
0504-000167	Q601
0504-000167	Q602
0504-000167	Q603
0505-001217	Q604
0504-000167	Q605
0504-000168	Q704
2007-001288	R1002
2007-007008	R1003
2007-007008	R1004
2007-001288	R1005
2007-007008	R1006
2007-007008	R1007
2007-007107	R1008
2007-000171	R101
2007-001307	R1010
2007-001307	R1011
2007-000159	R102
2007-000162	R103
2007-000148	R105
2007-008263	R106
2007-000171	R112
2011-001264	R113
2011-001264	R114

SEC Code	Design LOC
2011-001264	R115
2011-001264	R116
2011-001264	R117
2007-000168	R119
2007-000162	R120
2007-000171	R123
2007-000171	R124
2007-000162	R125
2007-000148	R126
2007-000171	R127
2007-000171	R128
2007-000171	R129
2007-000171	R130
2007-000171	R131
2007-000171	R132
2007-000171	R133
2007-000162	R134
2007-000171	R135
2007-000171	R136
2007-000162	R137
2007-000162	R138
2007-000162	R139
2007-000171	R140
2007-007981	R144
2007-007590	R145
2007-007488	R146
2007-001325	R148
2007-000171	R151
2007-000171	R153
2007-000171	R154
2007-000148	R155
2007-000171	R156
2007-000162	R157
2007-000162	R158
2007-000162	R159
2007-000171	R160
2007-007142	R161
2007-007142	R173
2007-000162	R174

SEC Code	Design LOC
2007-007312	R175
2007-007142	R177
2007-007107	R202
2007-007107	R203
2007-007107	R204
2007-007107	R205
2007-007107	R206
2007-007107	R210
2007-000171	R218
2007-000171	R219
2007-000171	R220
2007-007107	R221
2007-000171	R222
2007-000171	R301
2007-000162	R302
2007-000169	R304
2007-000162	R307
2007-007589	R308
2007-000159	R309
2007-000141	R310
2007-000171	R311
2007-000171	R312
2007-000174	R313
2007-000171	R314
2007-000153	R315
2007-000148	R316
2007-007573	R318
2007-007014	R319
2007-000171	R321
2007-001308	R322
2007-003028	R323
2007-000167	R325
2007-007014	R326
2007-007334	R327
2007-000140	R328
2007-000169	R329
2007-000162	R330
2007-000153	R332
2007-000566	R333

SEC Code	Design LOC
2007-000162	R335
2007-008137	R342
2007-000148	R343
2007-007137	R347
2007-000167	R348
2007-000168	R349
2007-000162	R351
2007-000169	R353
2007-000162	R354
2007-000162	R356
2007-000169	R357
2007-000171	R401
2007-000171	R402
2203-001383	R403
2007-000171	R405
2007-001119	R406
2007-000140	R407
2007-000162	R408
2007-000171	R409
2007-000171	R410
2007-007312	R412
2007-000171	R413
2007-000148	R414
2007-007875	R415
2007-000171	R416
2007-000171	R417
2007-007312	R420
2007-007312	R422
2007-007312	R423
2007-000171	R424
2007-000171	R425
2007-000171	R428
2007-000171	R429
2007-007138	R430
2203-001383	R431
2007-007139	R434
2007-000171	R448
2007-008213	R449
2007-001119	R450

SEC Code	Design LOC
2007-000145	R451
2007-000162	R452
2007-000140	R453
2007-001335	R454
2007-000171	R455
2007-000162	R456
2007-000171	R458
2007-007139	R502
2007-000172	R504
2007-001284	R505
2007-007132	R506
2007-007311	R507
2007-007107	R508
2007-007309	R512
2007-007142	R513
2007-007139	R514
2007-007107	R515
2007-000171	R519
2007-000148	R525
2007-007136	R526
2007-000171	R528
2007-000157	R539
2007-000140	R540
2007-000140	R541
2007-000171	R543
2007-007107	R601
2007-007981	R602
2007-007142	R603
2007-000148	R604
2007-000171	R605
2007-000148	R606
2007-007014	R607
2007-000171	R608
2007-000174	R609
2007-000174	R610
2007-000165	R611
2007-000174	R612
2007-000140	R613
2007-000140	R614

SEC Code	Design LOC
2007-000147	R615
2007-000147	R618
2007-000147	R619
2007-000162	R620
2007-000173	R621
2007-000140	R623
2007-000140	R624
2007-007311	R625
2007-007107	R626
2007-000171	R627
2007-000140	R628
2007-007107	R629
2007-007001	R630
2007-000140	R631
2007-007001	R632
2007-000140	R633
2007-007001	R634
2007-000140	R635
2007-007001	R636
2007-000162	R637
2007-000171	R641
2007-000171	R644
2007-000171	R645
2007-007001	R646
2007-007001	R650
2007-007001	R651
2007-000143	R652
2007-007001	R653
2007-000162	R662
2007-000162	R664
2007-000147	R666
2007-000171	R701
2007-000172	R703
2007-000171	R705
2007-000758	R706
2007-000160	R707
2007-000171	R708
2007-000172	R709
2007-000171	R712

SEC Code	Design LOC
2007-000171	R713
2007-000171	R714
2007-001319	R719
2007-000171	R721
2007-000171	R722
2007-000157	R801
2007-000170	R802
2007-000157	R803
2007-007308	R805
2007-007308	R807
2007-000171	R809
2007-000171	R810
2007-000171	R811
2007-000171	R812
2007-000171	R813
2007-000162	R817
2007-000171	R818
2007-008137	R901
2007-000162	R902
2007-007200	R903
2007-007200	R904
2007-000162	R905
2007-000162	R906
2007-000172	R907
2007-001308	R908
2007-002797	R909
2007-000138	R911
2007-000148	R912
2007-000171	R913
2007-000171	R914
3404-001143	SW101
1405-001093	TH601
1405-001093	TH602
1405-001093	TH603
1405-001093	TH604
1405-001093	TH605
1405-001093	TH608
1405-001093	TH609
1405-001093	TH610

SEC Code	Design LOC
1405-001093	TH613
1405-001093	TH614
1405-001093	TH615
1405-001093	TH616
1405-001093	TH617
1405-001093	TH618
1405-001093	TH619
1405-001093	TH620
1405-001093	TH621
1405-001093	TH622
1405-001093	TH623
1405-001093	TH624
1405-001093	TH625
1205-002185	U1001
1205-002268	U1002
1209-001434	U1003
1201-001889	U1004
2007-000173	U1007
0801-002294	U104
0801-000794	U105
0801-002345	U106
0801-000796	U107
0902-001665	U108
1203-001511	U109
0801-000796	U110
0801-000794	U111
1204-002161	U112
1106-001443	U201
1107-001467	U202
1105-001579	U203
1107-001467	U204
0801-002540	U205
1203-002690	U206
1203-001256	U301
0505-001376	U302
1203-002740	U303
1203-001702	U304
1203-001285	U305
1203-002251	U306

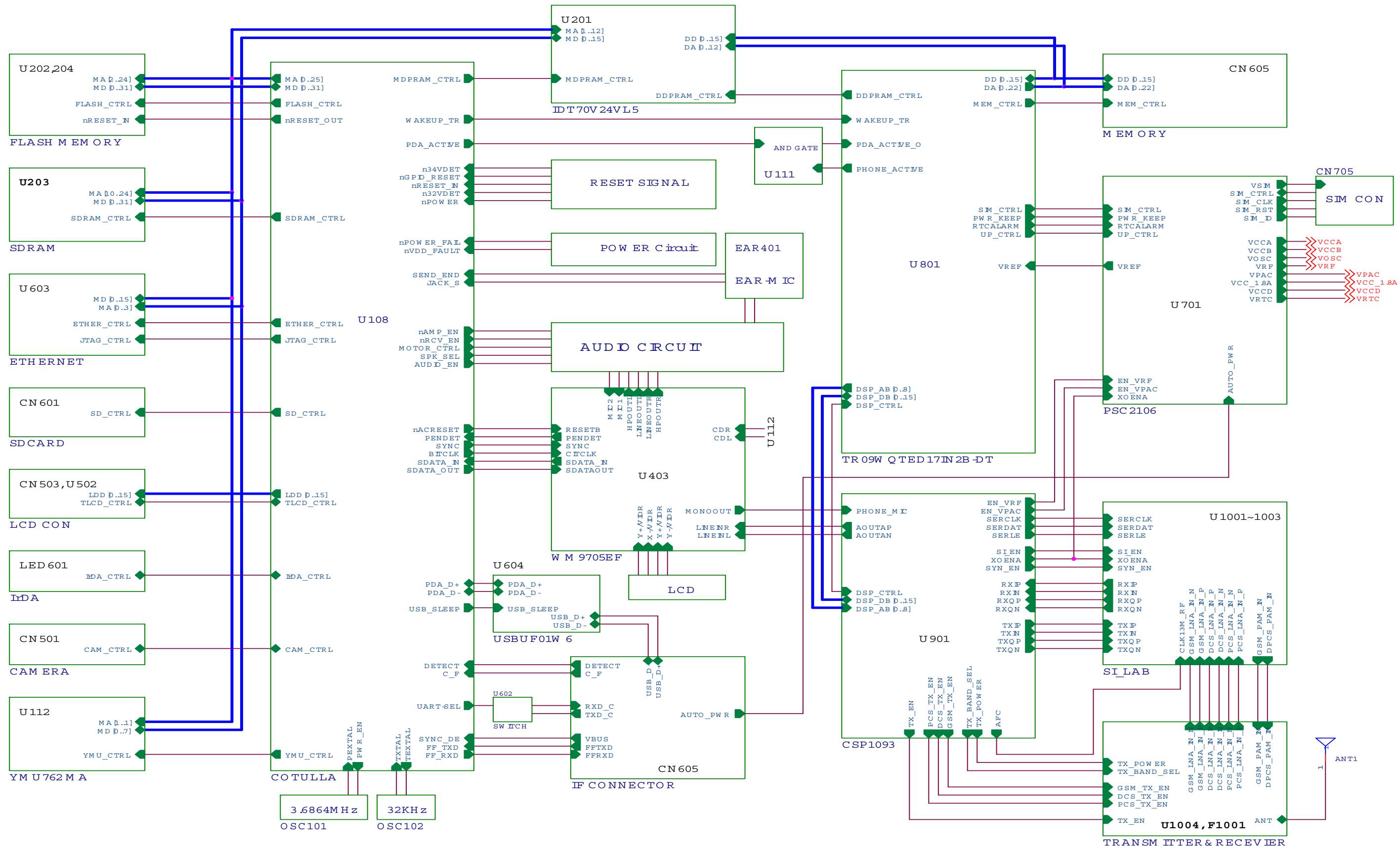
SGH-I700 Electrical Parts List

SEC Code	Design LOC
0505-001423	U307
1203-002783	U308
1203-001518	U309
1203-002368	U310
1203-002155	U311
1203-001256	U312
1203-001917	U314
0801-000796	U315
1203-002785	U316
1203-002785	U317
0801-002294	U318
0801-002294	U319
0801-002294	U320
0801-002294	U321
0505-001408	U322
1203-003461	U323
1203-001720	U401
1203-001518	U402
1205-002149	U403
1201-001900	U404
1201-001725	U405
1001-001183	U407
1001-001152	U408
1201-001920	U501
1301-001624	U502
3409-001082	U503
1203-002187	U504
1203-002187	U505
1203-002250	U601
1001-001183	U602
1203-001518	U603
0407-001038	U604
1201-001920	U605
1203-003218	U606
1203-002902	U701
1109-001260	U703
GH09-00025A	U801
1209-001219	U802
0801-000794	U803

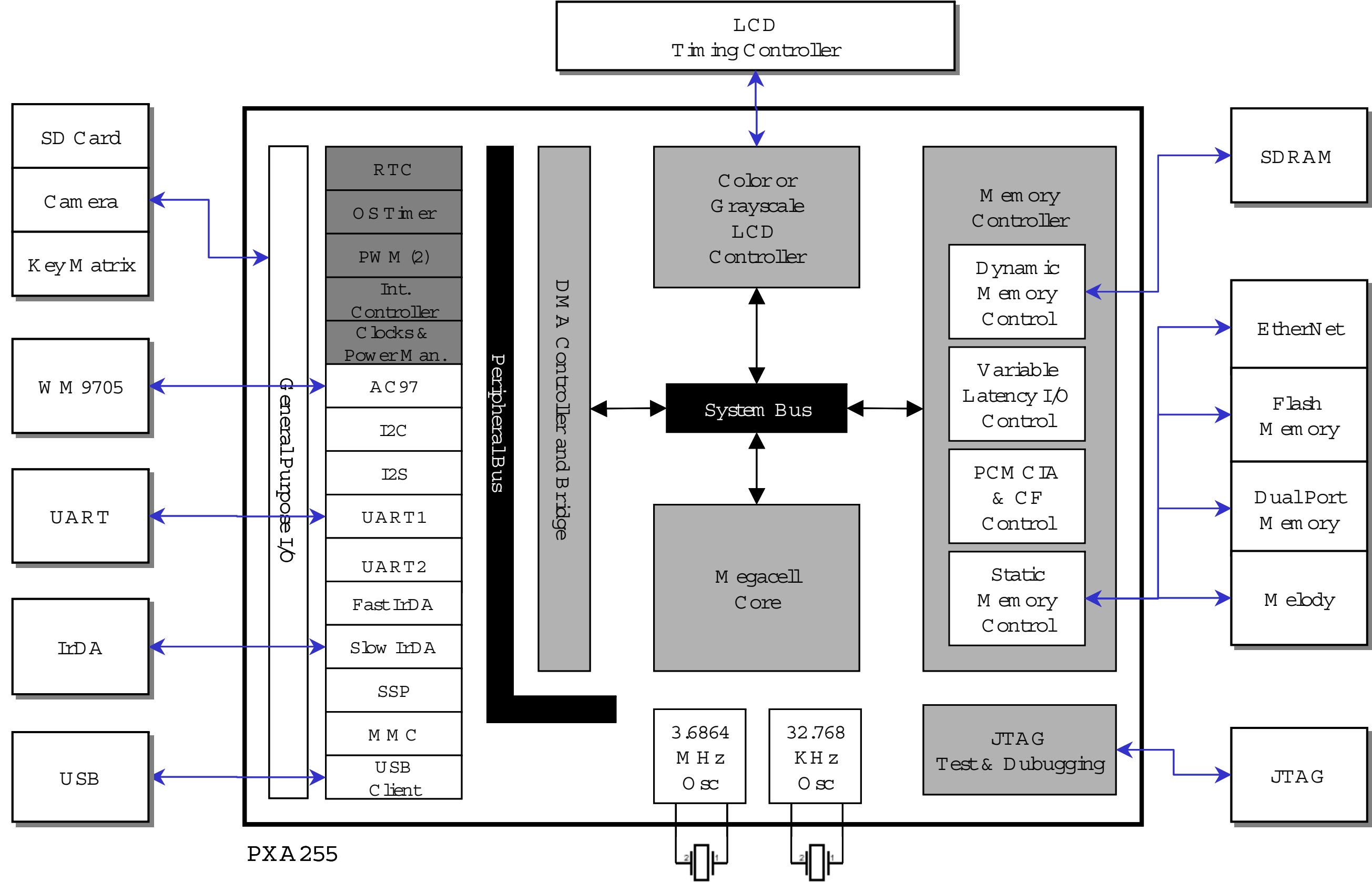
SEC Code	Design LOC
1204-001984	U901
0504-001042	U902
0504-001042	U903
0504-001042	U904
1405-001082	V501
0406-001150	V601
0406-001150	V606
0406-001150	V607
0406-001150	V608
0403-001387	ZD301
0406-001150	ZD402
0406-001150	ZD403
0406-001150	ZD404
0406-001150	ZD405
0406-001150	ZD406
0406-001150	ZD407
0406-001150	ZD408
0406-001150	ZD409
0406-001150	ZD410
0406-001150	ZD411
0406-001084	ZD601
0406-001084	ZD602
0406-001084	ZD603
0406-001084	ZD604
0406-001084	ZD605

5. SGH-i700 Block Diagrams

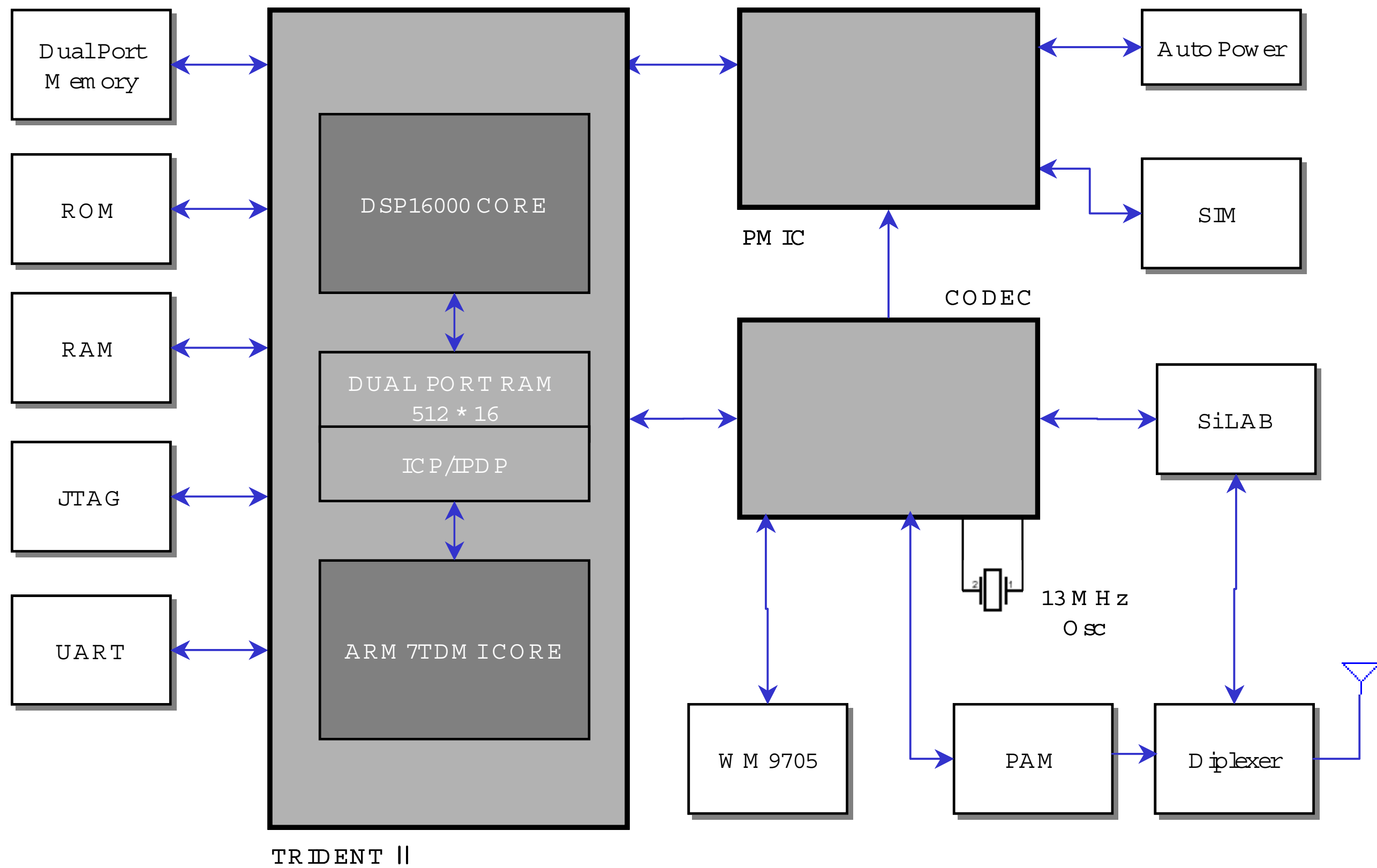
5-1. SGH-i700 Main Block Diagram



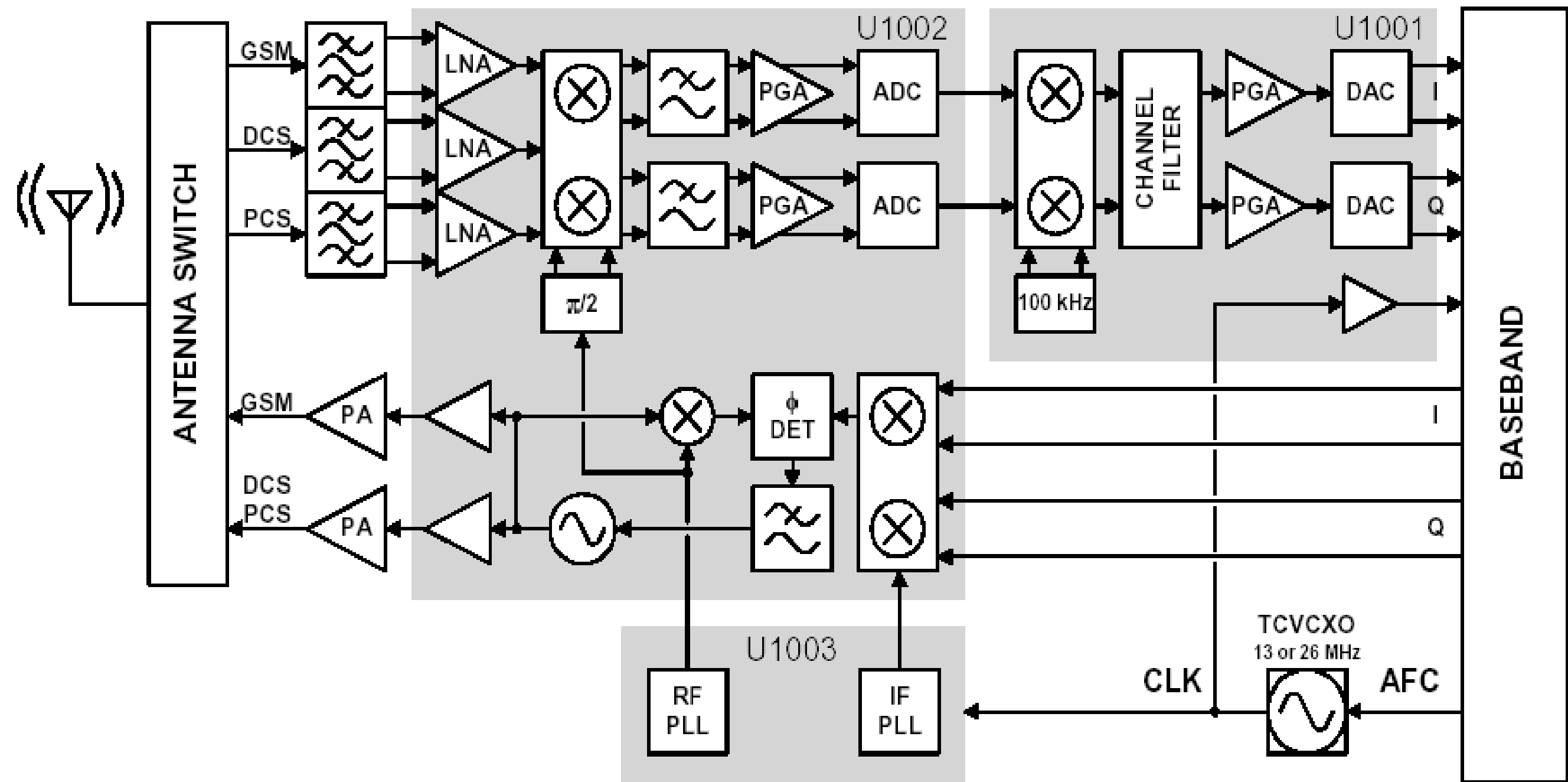
2. SGH-i700 PDA Block Diagram



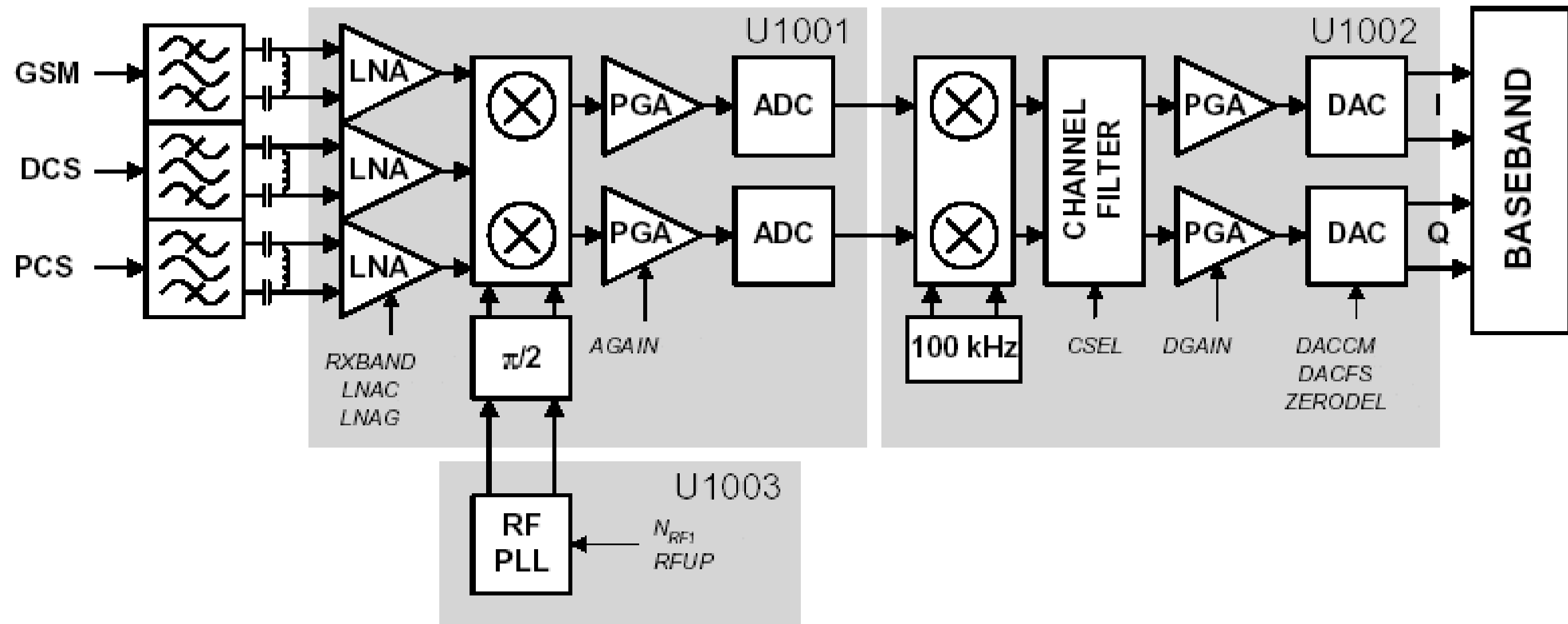
5-3. SGH-i700 Phone Block Diagram



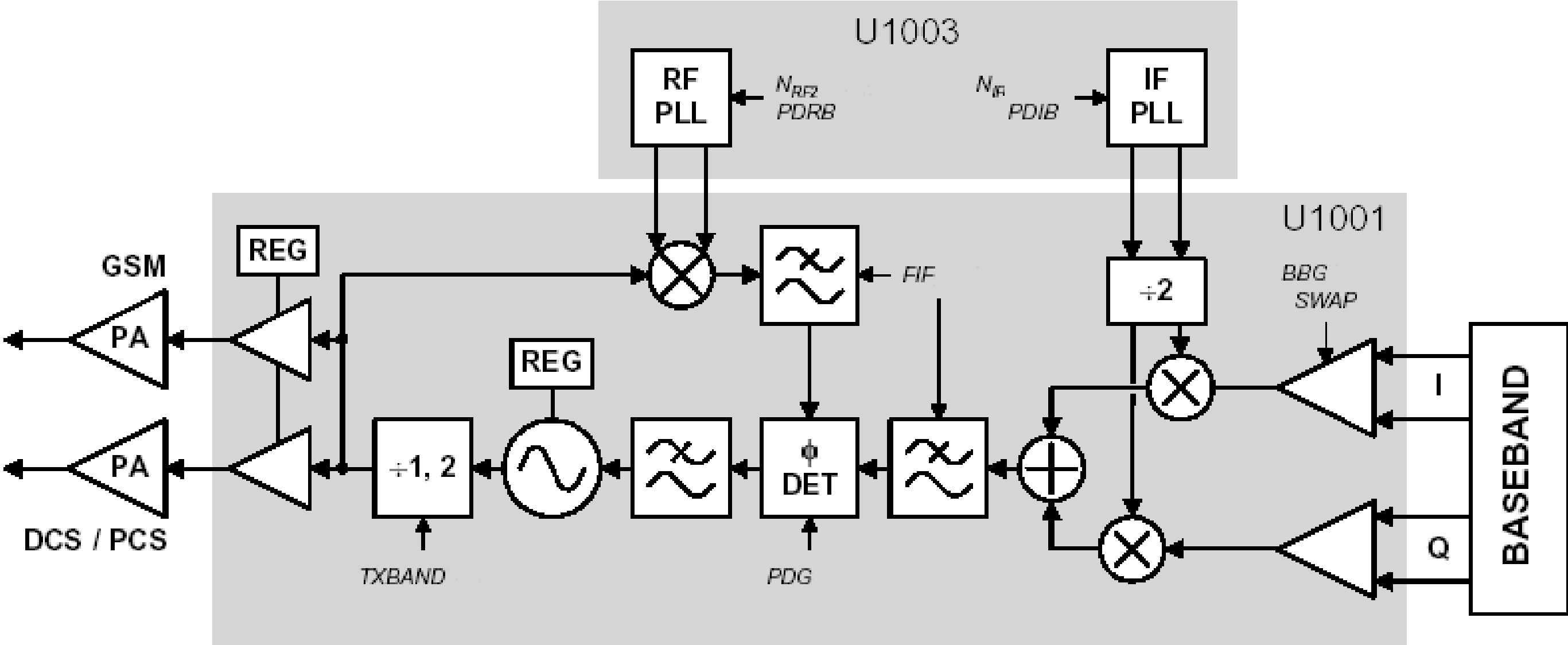
5-4. SGH-i700 RF Transceiver Block Diagram



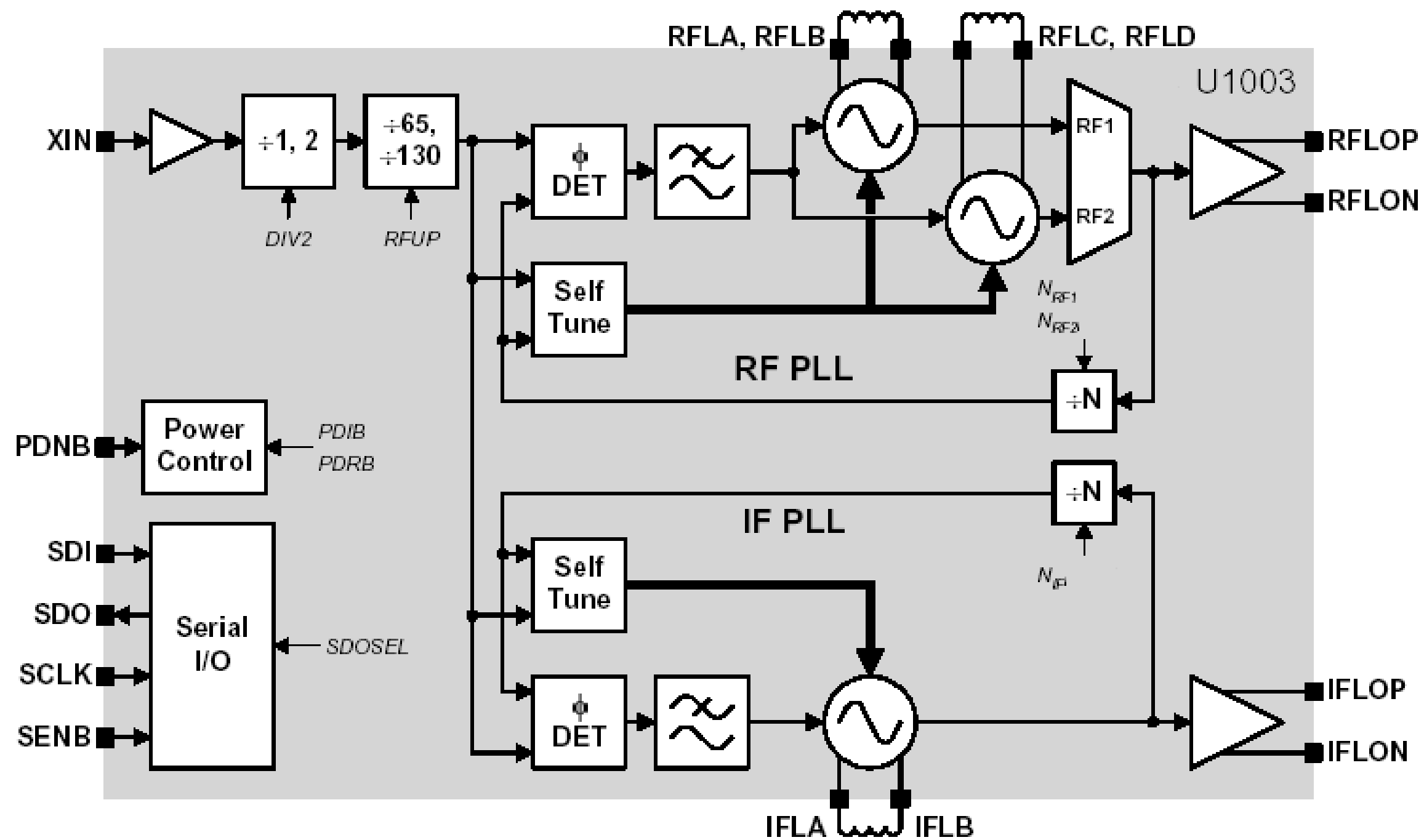
5-5. SGH-i700 RF Receiver Block Diagram



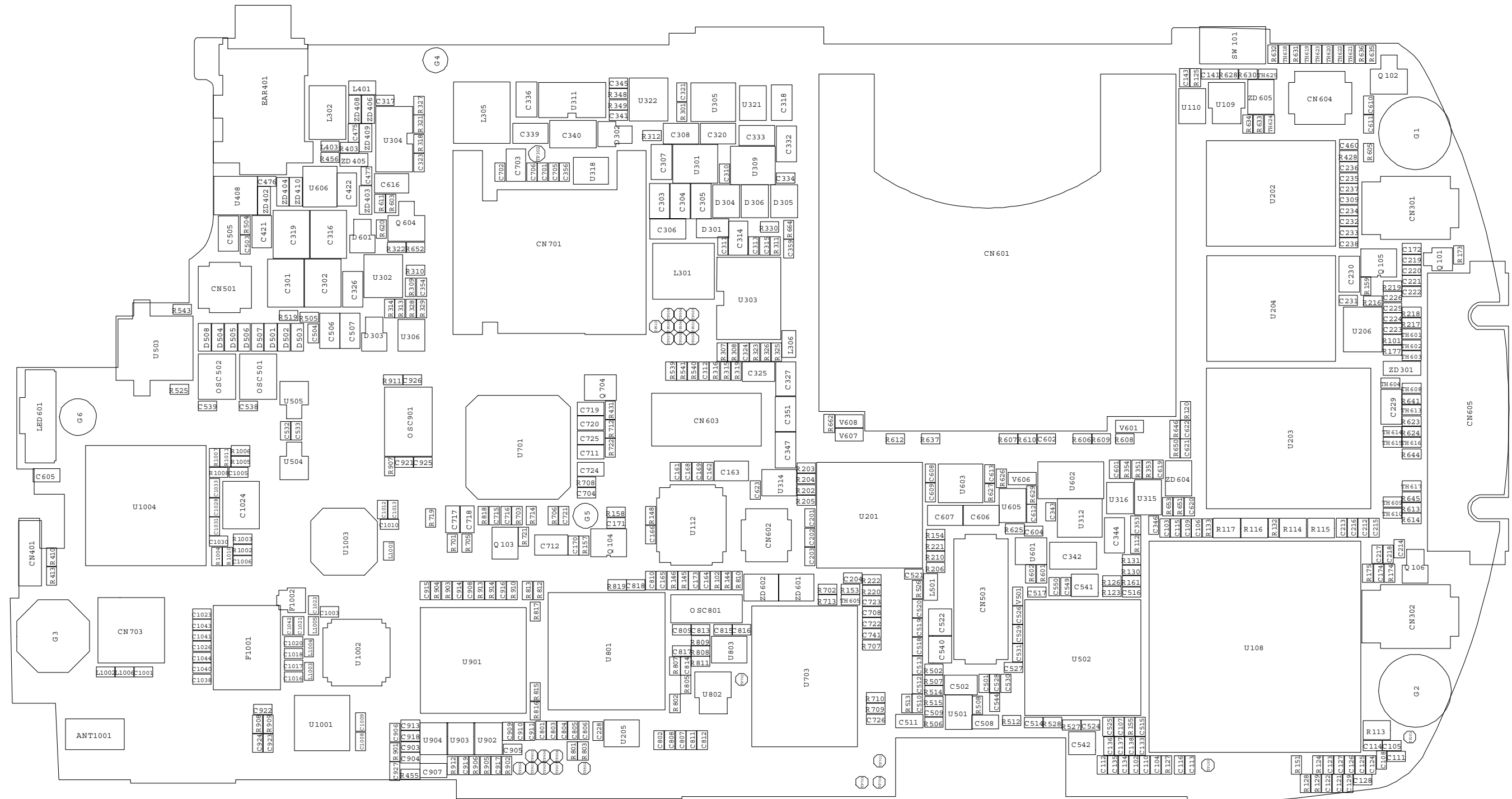
5-6. SGH-i700 RF Transmit Block Diagram



5-7. SGH-i700 RF Synthesizer Block Diagram



1.Main TOP Diagram



2. Main Bottom Diagram

